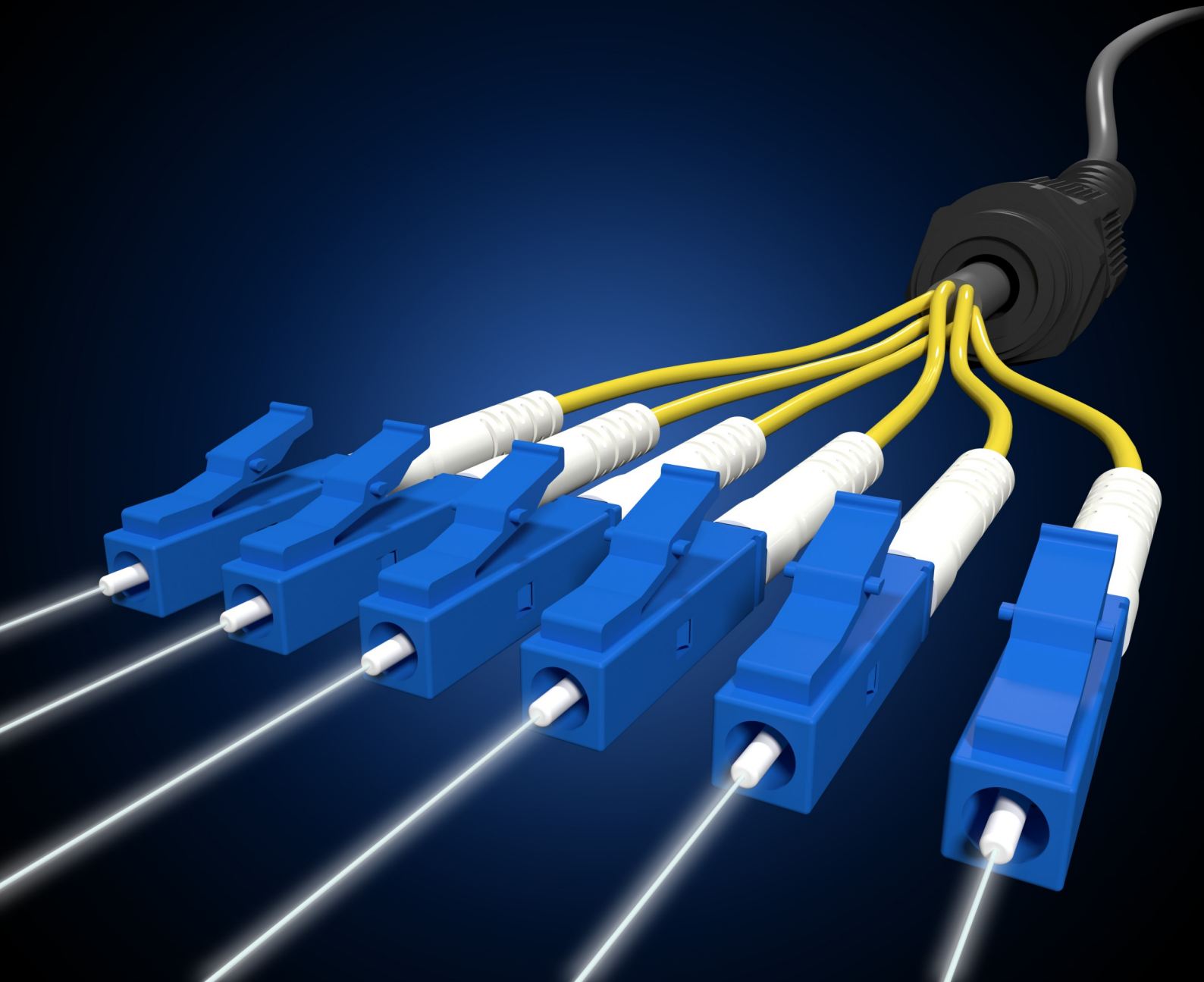


# 2019 Product Catalogue

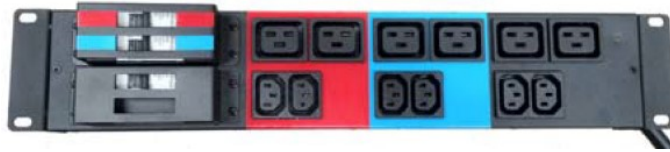
## Power Products Sub-Catalogue



# Power Products

## Custom Power Distribution Unit

Let us make a PDU Solutions custom fit your requirement

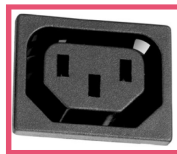


Below are some of the many options we can incorporate into a custom PDU for you

### Output options



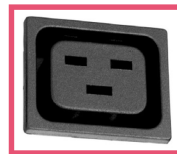
Australian 3 Pin GPO



IEC-C13



IEC LOCK-C13



IEC-C19



IEC LOCK-C19

### Input options— cable mount



10A SAA



15A SAA



IEC-C14 10A



IEC-C20 16A



Captive nut

### Input options— Surface mount



C14 Panel mount



C20 Panel mount

### Input options 56 Series Single Phase



10A



15A



20A Flat

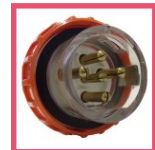


20A Round



32A

### Input options 56 Series Three Phase



20A 3P



32A 3P

### General options



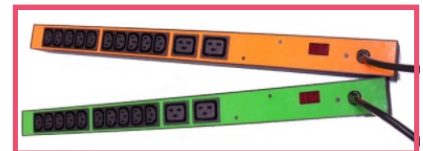
Power Indicator



Current Meter and Monitoring



Switches

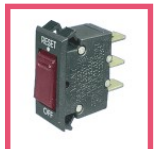


Colour Coding

### Circuit protection



MCB



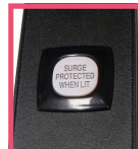
Switch/Thermal Breaker



RCD/MCB



Fuse



Surge Protection



Branch Circuits



Thermal Overload

### Mounting options



End Mount Down



End Mount Side



End Mount Up



Side Mount Down



Side Mount Up

[www.selectdata.com.au](http://www.selectdata.com.au)

07 3556 1480

# Power Products

## Standard PDU's



Our Power Distribution Units—PDU's have been designed as an ideal distribution point for Rack / Cabinet mounted power, providing reliable distribution via a single input with multiple outputs.

Standard Units include 1.8mts power cords, OLP ( Overload Protection ) , 19" Rack Mounting hardware.

Options include Surge Protection, IEC Power Inlets, & socket configurations up to 20 way on vertical with the ability to mix IEC & Australian 3 pins Sockets.

### Standard Products

Part Number	Description
<b>Australian 3 Pin PDU</b>	
SDP-AUS10-08SH	AUS 1U 8 way Horizontal with OLP
SDP-AUS10-07SHSP	AUS 1U 7way Horizontal with OLP & SP
SDP-AUS10-12SVSP	AUS 1U 12 way Vertical with OLP & SP
SDP-AUS10-20SVSP	AUS 1U 20 way Vertical with OLP & SP
<b>IEC C13 PDU</b>	
SDP-IEC10-10SH	IEC 1U 10 way Horizontal with OLP
SDP-IEC10-08SHSP	IEC 1U 8 way Horizontal with OLP & SP
SDP-IEC10-12SVSP	IEC 1U 12 way Vertical with OLP & SP
SDP-IEC10-20SVSP	IEC 1U 20 way Vertical with OLP & SP



### Key Features:

- IEC or AUS 3 Pin
- Independently Tested & certified to exceed Australian Standards requirements
- 10 AMP OLP (Over Load Protection)
- Rack Mount Hardware included
- 1.8mt attached cord

### Optional Features:

- SP (Surge Protection)
- Configurable Formats
  - IEC Inlet
  - Mixed Connections ( IEC /AUS 3Pin )
  - Up to 20way Vertical



[www.selectdata.com.au](http://www.selectdata.com.au)

07 3556 1480

# Power Products

## IEC Lock



### UNIQUE PATENTED LOCKABLE FEMALE C13 & C19 IEC CONNECTORS AND OUTLETS

Guards against accidental disconnection of Computers, PDU's, Servers and most Network Devices.



#### Suitable for use with 'ANY STANDARD' C14 or C20 inlet

- Protects appliances that are vulnerable to vibration
- Connector cannot be accidentally pulled or vibrated out of the inlet



Connectors and outlets can be used with standard IEC plugs and inlets.

But for extra protection use both to ensure against accidental removal of power cables connected to PDU's, Servers, Network devices etc.



**NEW**

#### THE ORIGINAL & PATENTED RETROFIT SOLUTION NOW COMES IN A REWIREABLE VERSION!

- Rewireable - offering total flexibility when assembling cables
- LSZH - Low Smoke Zero Halogen

**WORLD'S  
FIRST**  
LOCKING REWIREABLE  
C13 IEC CONNECTOR



[www.selectdata.com.au](http://www.selectdata.com.au)

07 3556 1480

  
**SelectData**  
Cables, Connectors & More

# Power Products

## IEC Lock



C13 to C14



C13 to Free Stripped End



C13 to Australian 3 pin



C13+ (High Density) to C14



C13+ (High Density) to Free Stripped End



C13+ (High Density) to Australian 3 pin



C19 to C20



C19 to Free Stripped End



C19 to Australian 3 pin

Medical Grade  
Clear / Orange



Rewireable  
C13+



C13  
Panel



C19  
Panel



C13

Panel

Socket

4 & 6



Approved for use  
in Australia

### Patent Information

Patents: U.K. Patent  
No. GB2383202B  
International Patent application No.  
PCT/GB02/05714

[www.selectdata.com.au](http://www.selectdata.com.au)

07 3556 1480

  
**SelectData**  
Cables, Connectors & More

# Power Products

## IEC Cord Sets



Part Number	Description
IEC-SAAC13-1BK	SAA - C13 10amp Black 1mt
IEC-SAAC13-2BK	SAA - C13 10amp Black 2mt
IEC-SAAC13-3BK	SAA - C13 10amp Black 3mt
IEC-SAAC13-5BK	SAA - C13 10amp Black 5mt
IEC-SAAC19-1BK	SAA - C19 15amp Black 1mt
IEC-SAAC19-2BK	SAA - C19 15amp Black 2mt
IEC-SAAC19-3BK	SAA - C19 15amp Black 3mt
IEC-SAAC19-5BK	SAA - C19 15amp Black 5mt
IEC-C13C14-1BK	C13 - C14 10amp Black 1mt
IEC-C13C14-2BK	C13 - C14 10amp Black 2mt
IEC-C13C14-3BK	C13 - C14 10amp Black 3mt
IEC-C13C14-5BK	C13 - C14 10amp Black 5mt
IEC-C19C20-1BK	C19 - C20 15amp Black 1mt
IEC-C19C20-2BK	C19 - C20 15amp Black 2mt
IEC-C19C20-3BK	C19 - C20 15amp Black 3mt
IEC-C19C20-5BK	C19 - C20 15amp Black 5mt
IEC-SAAC19-2BK-10amp	SAA - C19 10amp Black 2mt
IEC-SAAC14-150MM	SAA - C14 10amp Black 150mm
IEC-SAAC13-2OR	SAA - C13 10amp Orange 2mt - Medical

	Female C3	Male C4		Female C13	Male C14
	Female C5	Male C6		Female C15	Male C16
	Female C7	Male C8		Female C19	Male C20

- All Power Cords meet Australia Power Regulations
- Above part numbers are our standard stock lines
- Standard colour is black
- "SAA" in part number signifies standard Australian Plug
- Other Colours & lengths may be available but with M.O.Q.

[www.selectdata.com.au](http://www.selectdata.com.au)

07 3556 1480

**SelectData**  
Cables, Connectors & More