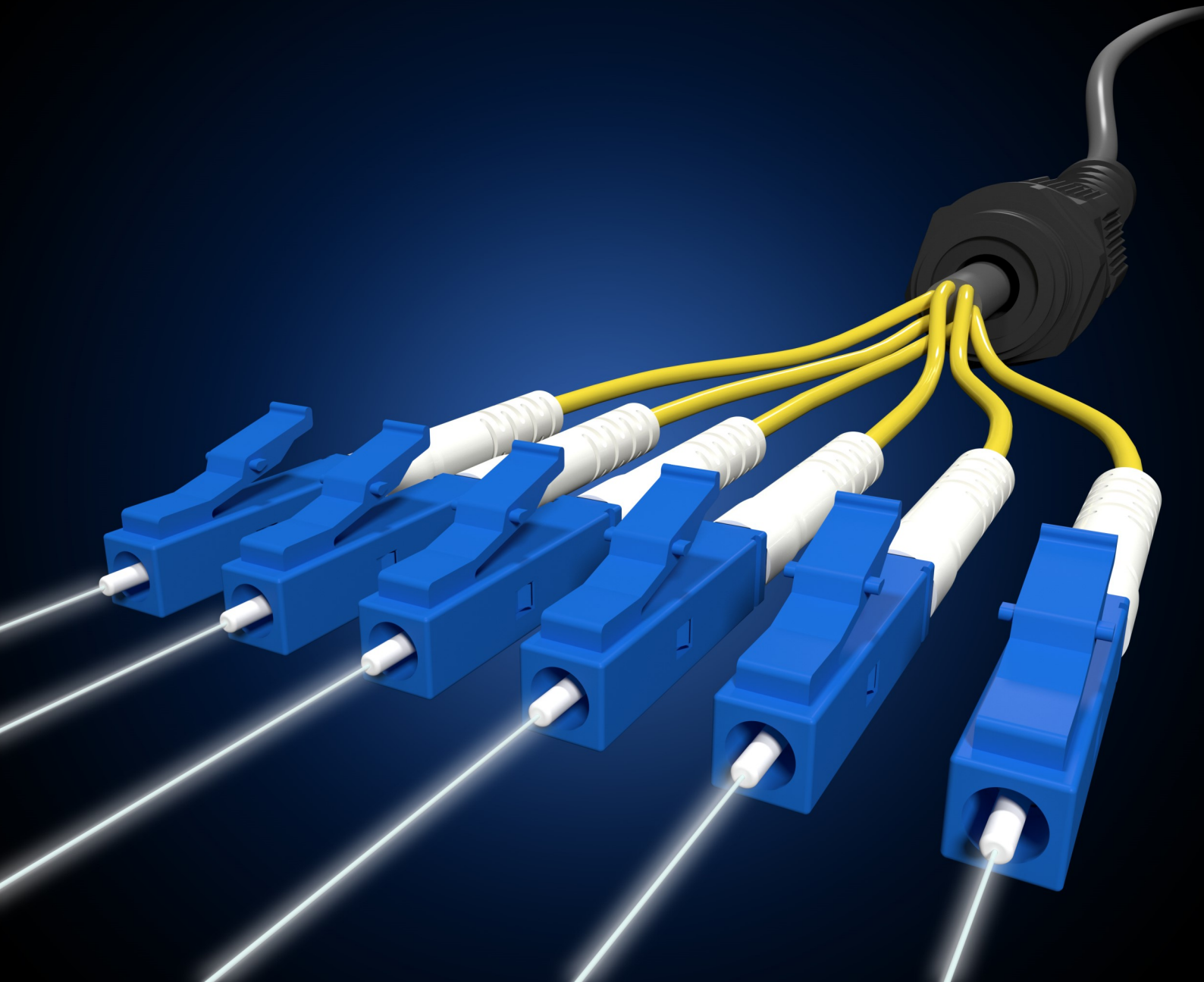


# 2019 Product Catalogue

## Industrial Ethernet Solutions Sub-Catalogue



# Industrial Networking Connections—M12

M12 connectors are circular connectors with a 12-mm locking thread used for sensors, actuators, Fieldbus and industrial Ethernet, primarily in factory automation applications. Often with ratings of IP65, IP68 and IP69K, they are ideal for wash down and corrosive environments.

They are available with 3, 4, 5, 8 and 12 pins. While higher pin counts are not planned, other locking styles such as bayonet and push-pull are continuously under development.

The M12 family can be found in many applications such as factory automation, measurement and control, communications, food and beverage, transportation, agriculture, robotics and alternative energy.

When it comes to specific applications, users must select the right pin count. For sensors and power applications, 3 and 4 pins are required. Profinet and Ethernet use 4 and 8 pin counts. And Fieldbus, CANbus and DeviceNet primarily use 4 and 5 pin counts. Finally, specify 12 pins for signal requirements.

Several styles of coding exist in M12 connectors. This coding prevents incorrect mating on products. In addition, shielding is available in most coded M12 connectors. For example, X-coded connectors are specifically shielded by the design of their coding.

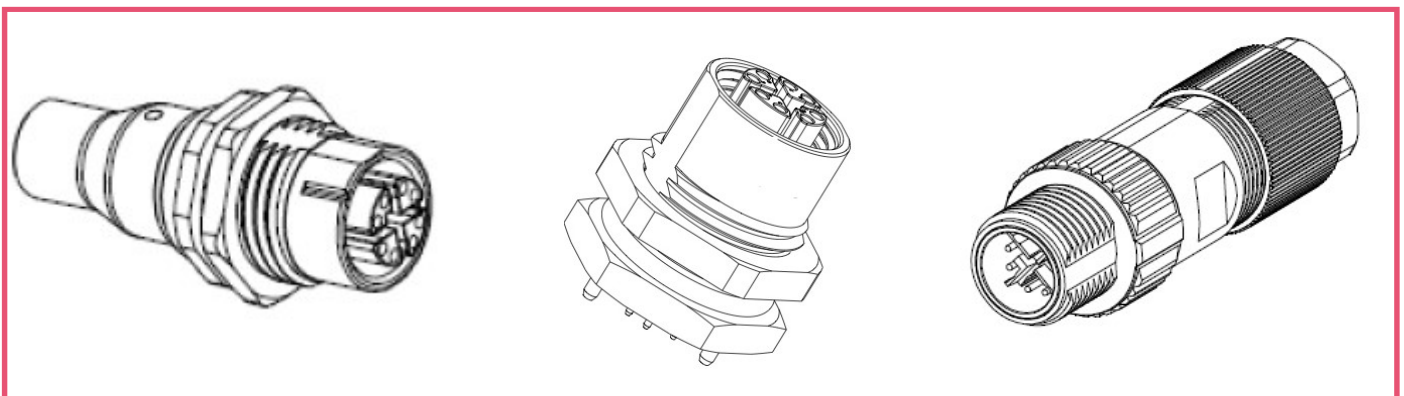
The most common types of coding include:

- A-coded for sensors, dc power and 1 Gbit Ethernet
- B-coded for Profibus
- C-coded for ac power
- D-coded for 100 Mbit Ethernet
- X-coded for 10 Gbit Ethernet ( Cat6A Compliant )
- S-coded for ac power (will eventually replace C-coded power parts)
- T-coded for dc power (will eventually replace A-coded power parts)



A-, B-, D- and X-coded are most prevalent. This is because the A-, B- and D-coded connectors have been around for a long time and are some of the original M12 connectors. X-coded connectors are becoming more popular for high-speed industrial Ethernet and will eventually replace the A and D-coded parts for Ethernet applications.

## Ask us for assembled cables



[www.selectdata.com.au](http://www.selectdata.com.au)

07 3556 1480

  
**SelectData**  
Cables, Connectors & More

# Industrial Networking Solutions

Compatible with  
MOXA, Hirschmann, &  
many other leading brands

# ORing

Designed for Rugged Excellence

Railway



Oil & Gas



Resource & Energy



Power Station



Wind Power



Solar Power



Traffic Monitoring



IP Surveillance



Manufacturing Automation



Building Automation



### Industrial Ethernet Switch

- Rack-Mount (Non-PoE)
- DIN-Rail Gigabit (DIN-Rail / Wall-Mount, Non-PoE)
- DIN-Rail Fast (DIN-Rail / Wall-Mount, Non-PoE)
- PoE (Rack-Mount / DIN-Rail / Wall-Mount)
- IP-67
- PCI/PCle-Card
- EN50155
- C1D2
- Optical & PoE Network Accessories

### Industrial Media Converter

- Rack-Mount Ethernet-To-Fiber
- DIN-Rail Ethernet-To-Fiber (DIN-Rail / Wall-Mount)
- PoE Ethernet-To-Fiber (DIN-Rail / Wall-Mount)
- USB-To-Serial
- Serial-To-Serial

### Industrial Serial Products

- Rack-Mount Serial Device Server
- Serial Device Server
- EN50155 Device Server
- Wireless Serial Device Server
- Serial USB Converters
- Serial Media Converters

### Industrial Wireless Access Point

- WLAN Access Point (DIN-Rail)
- WLANIP-67 Access Point
- EN50155 WLAN Access Point

### Industrial Cellular VPN Router

- 3.5G Cellular VPN Router
- 3.5G WLAN Cellular VPN Router
- EN50155 3.5G WLAN Cellular VPN Router
- 4G LTE Cellular VPN Router
- 4G LTE WLAN Cellular VPN Router
- EN50155 4G LTE WLAN Cellular VPN Router

### Accessories

- RF Antenna, RF/ Optical Fiber Patch Cord/ M-Series Cables, Power Supplies
- Gigabit / Fast Ethernet SFP/ BIDI-SFP modules

### Management Utility/Controller

- Open-Vision v3.6

### Industrial M2M Gateway

- Din-Rail M2M Gateway

### Industrial IOT Product

- Wireless Remote I/O (ORIO)
- Smart Meter (ORGate)
- Street Light Controller (Zigbee/LoRa/NB-IoT/CMS 1.0)

### ORing Cloud

- ORing PaaS Products
- ORing SaaS Product

[www.selectdata.com.au](http://www.selectdata.com.au)

07 3556 1480

  
**SelectData**  
Cables, Connectors & More