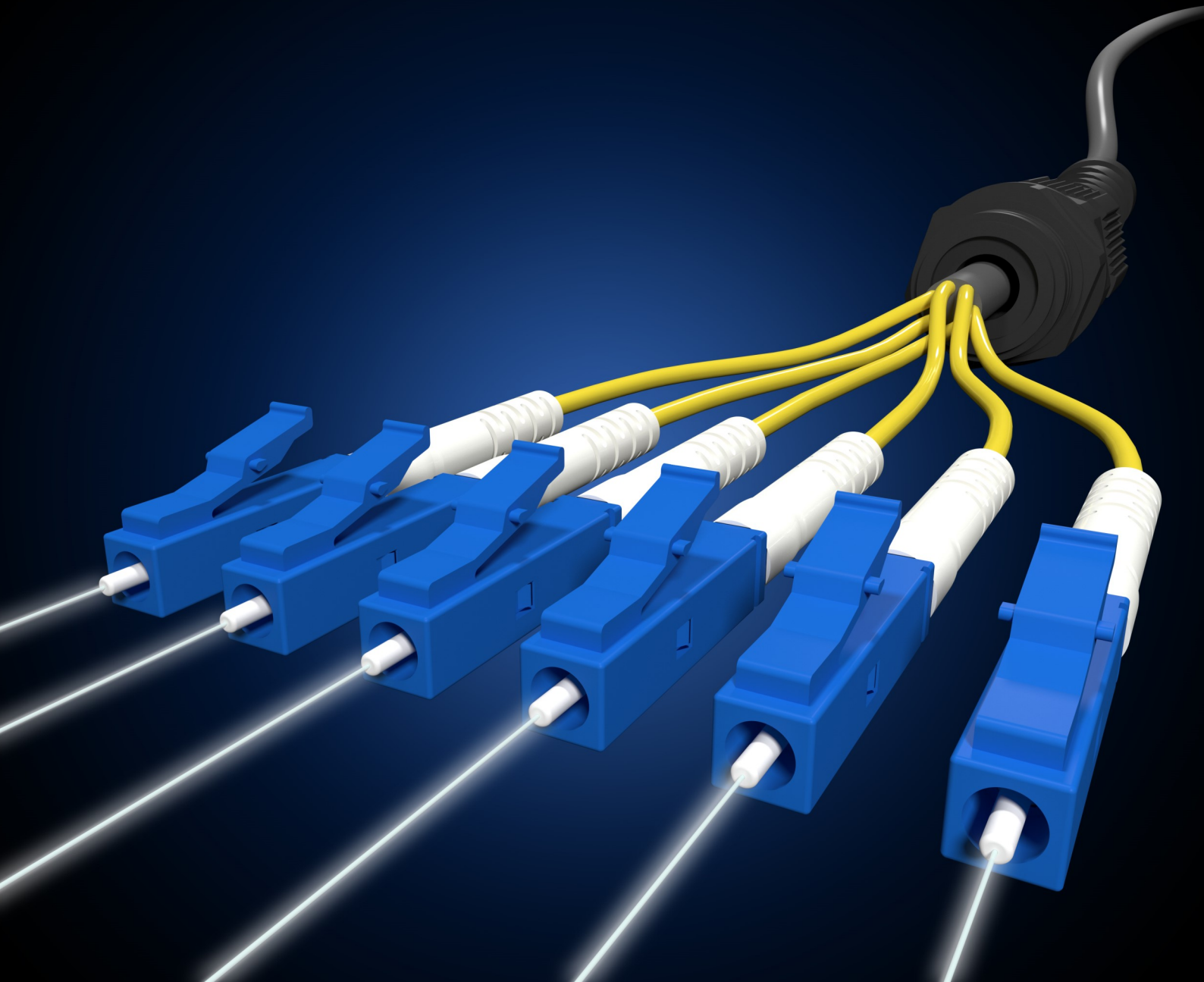


2019 Product Catalogue

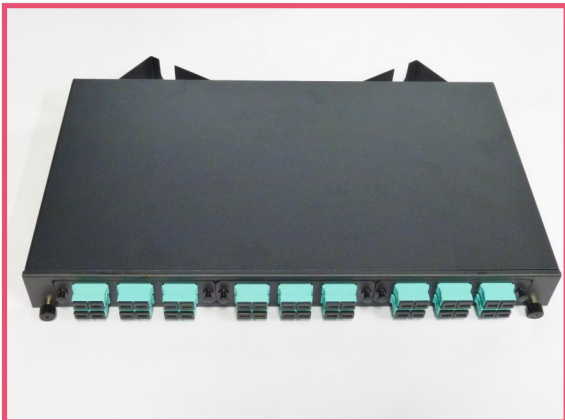
Fibre Optic FOBOT's and Enclosures Sub-Catalogue



FOBOT 1U Sliding

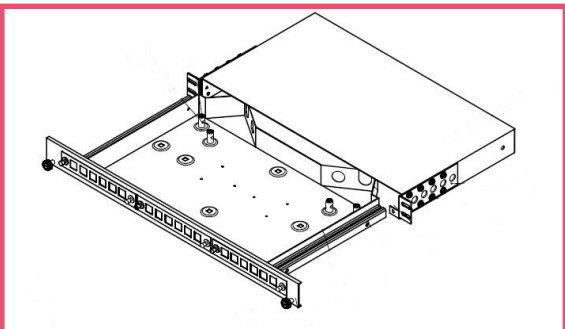
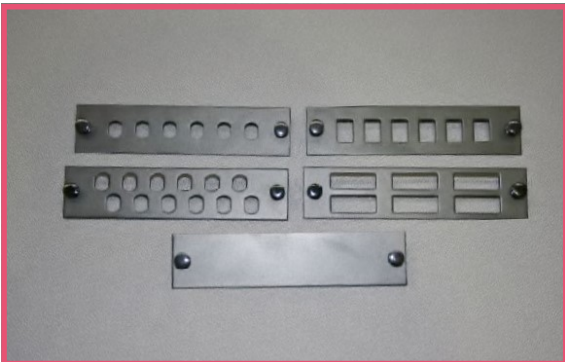


Part Number	Description
FT1RU-S3	Fibre Tray 1RU - Sliding
FTSCSX6	6 Port SC SX or LC DX Plates
FTSCDX6	6 Port SC DX or LC Quad Plates
FTSTS6	6 port ST Simplex Plates
FTSTS12	12 port ST Simplex Plates
FTBLANK	Blank Plates



Features

- Angled rear cable entry
- Up to 72 LC Fibres in 1 RU
- Includes kit with:
 - Cable ties,
 - Strain relief gland,
 - Cage nuts,
 - Cable management clips,
 - Brass binding posts
- Connector panels available for:
 - FC Simplex
 - ST Simplex
 - SC Simplex or Duplex
 - LC Duplex or Quad
 - Blanking plates
- Supports most industry standard splice cassettes
- Black in colour
- Adjustable Mounting brackets
- Long life steel finish



www.selectdata.com.au

07 3556 1480

FOBOT

1U Sliding—Rodent Proof



Part Number	Description
FT1RU-S3-RP	Fibre Tray 1RU - Sliding—Rodent Proof
FTSCSX6	6 Port SC SX or LC DX Plates
FTSCDX6	6 Port SC DX or LC Quad Plates
FTSTS6	6 port ST Simplex Plates
FTSTS12	12 port ST Simplex Plates
FTBLANK	Blank Plates

Features

- Angled rear cable entry
- Up to 72 LC Fibres in 1 RU
- Includes kit with:
 - Cable ties,
 - Strain relief gland,
 - Cage nuts,
 - Cable management clips,
 - Brass binding posts
- Connector panels available for:
 - FC Simplex
 - ST Simplex
 - SC Simplex or Duplex
 - LC Duplex or Quad
 - Blanking plates
 - Fits 3 x MTP Cassettes
- Supports most industry standard splice cassettes
- Black in colour
- Long life steel finish

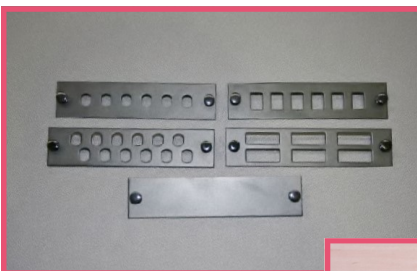


Plate Selection

Accessories



Additional specific features to ensure enclosure integrity—Rodent Proof:

- Rodent Proof Cable entry points assessable via metal panel knockouts
- Addition lip on lid to add strength
- Flatten rear profile

www.selectdata.com.au

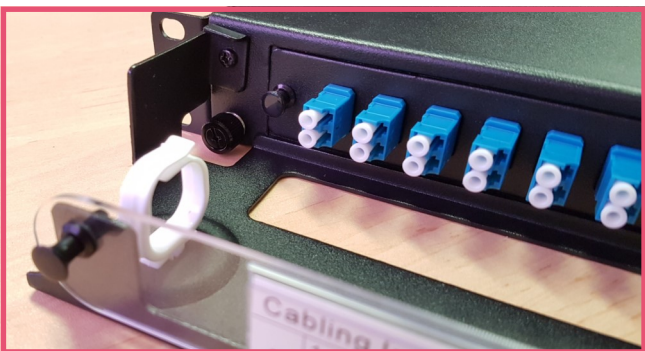
07 3556 1480

FOBOT

Front Cable Manager and Label



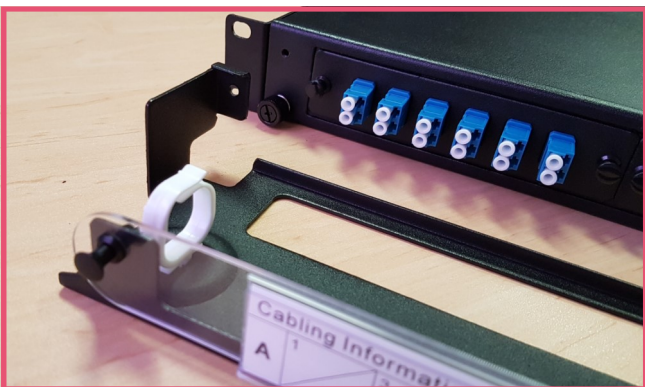
Fitted to FOBOT



Note screw fitting



Before installation



Note hole in FOBOT

Part Number	Description
FT1RU-FCM	1U Front Cable Manager and Label

Features

- Suits 1U FOBOT
- Supports Patch leads
- Improves organization
- Can be retro fitted to existing FOBOTs
- Label can be written on or replaced with custom label
- Allows for Patch Leads to be directed

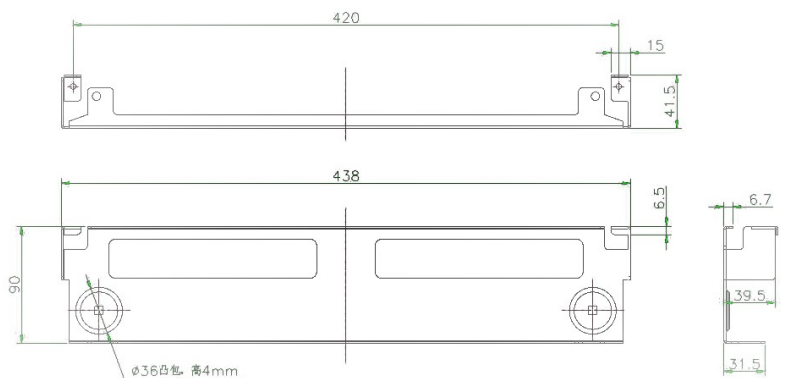
Left

Right

Through to higher or lower levels

Details

- Measurements 41.5mm x 438mm x 90mm
- Material Black Powdered Aluminium
- Accessories inc 2x Cable Guides
Label holder



www.selectdata.com.au

07 3556 1480


SelectData
Cables, Connectors & More

FOBOT

Lockable Wall Box



Part Number	Description
FT-WB1	Lockable 2 Door Wall Mount

Features

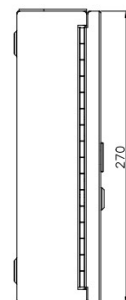
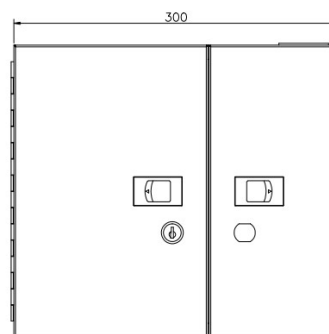
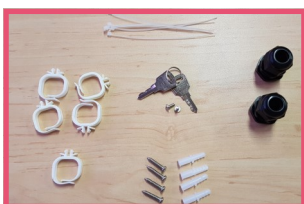
- Fits 2 standard plate (see below photo for selection)
- Wall Mount
- Top and Bottom cable knock out entries (8)
- Rodent Proof
- Up to 48 Fibres (48 x LC, 24 x SC/ST)
- Include Splice tray

Details

- Measurements 300mm x 270mm x 77.5mm
- Material Black Powdered Steel
- Accessories inc 5x Cable Guides
2x Keys
2xCable Glands
5x Cable Ties
4x Wall Screws and Plugs



Plate Selection



www.selectdata.com.au

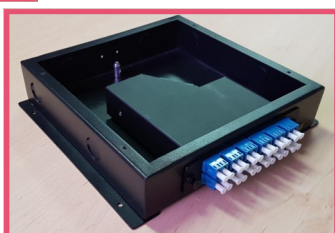
07 3556 1480

FOBOT

Small DIN Rail



Fitted with Splice tray



Fitted with MTP/MPO Cassette



Part Number

FT-WM-DIN

Description

Small DIN Mount/Wall Mount

Features

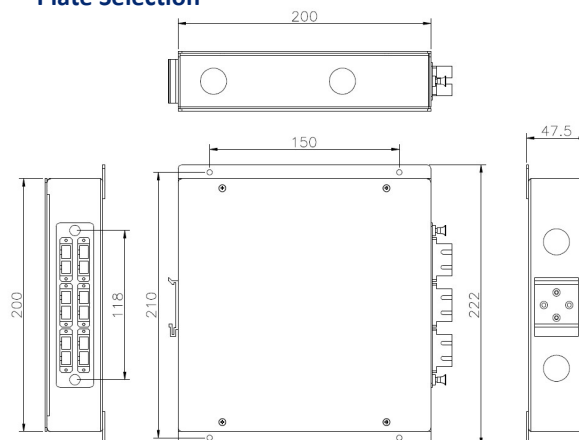
- Fits 1 standard plate (see below photo for selection)
- DIN or Wall Mount
- Top, Bottom & Rear cable knock out entries (6)
- Rodent Proof
- Fits MTP/MPO Cassette (if splice tray is removed)
- Up to 24 Fibres
- Include Splice tray

Details

- Measurements 222mm x 200mm x 47.5mm
- Material Black Powdered Steel
- Accessories inc 2x Cable Guides
Din Clip
Cable Gland
2x Cable Ties



Plate Selection



www.selectdata.com.au

07 3556 1480


SelectData
Cables, Connectors & More

FOBOT Mini DIN Rail



Front View

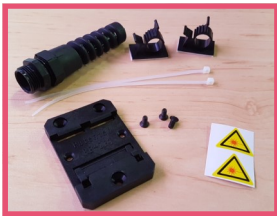
Part Number	Description
FTDINMINI	Mini DIN Box

Features

- DIN or Wall Mount
- 12 Fibre Capacity (SC or SCA)
- 24 Fibre Capacity (LC or LCA)
- Knock outs to suit
Top or Bottom Cable Entry
MTP /MPO
- Rodent Proof
- Suitable for Pre-Terminated or Spliced Installation
- Works with Loose Tube or Riser Cable

Details

- Measurements 155mm x 55.5mm x 110mm
- Material Black Powder coated Steel
- Accessories inc Cable Gland
2 x Cable Guides (Adhesive Backed)
2 x Cable Ties
DIN Rail Clip
2x Laser Warning Stickers



Accessories



DIN Clip

* SC Duplex / LC Quad plate available as special order



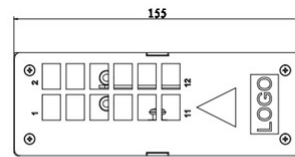
Top Cable Entry



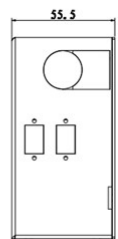
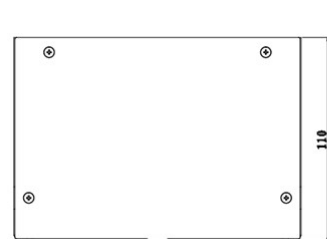
Side View
(Wall mount holes)



MTP / MPO



DIN Rail not included

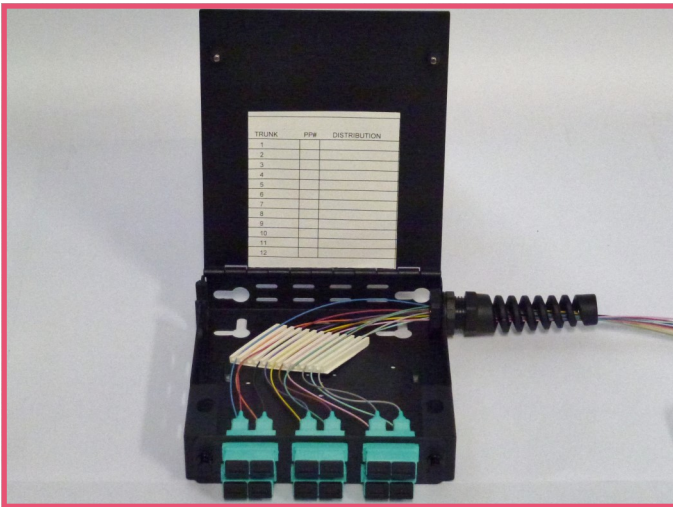


www.selectdata.com.au

07 3556 1480

FOBOT

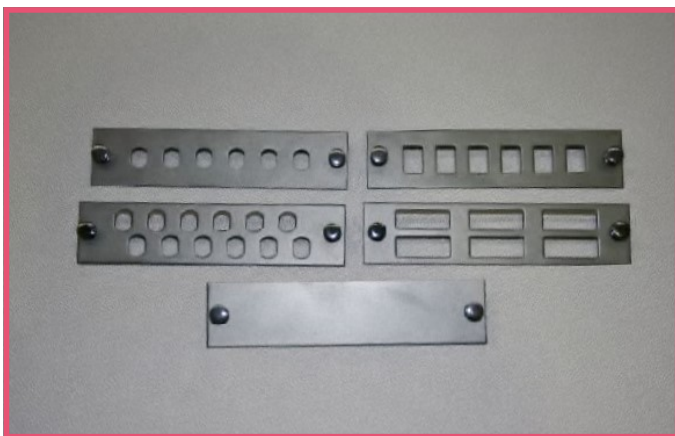
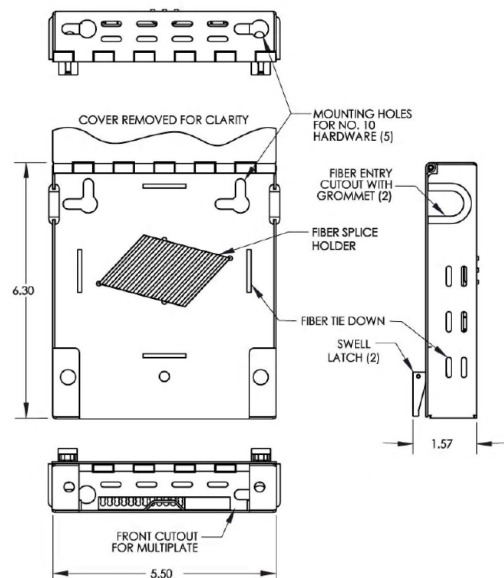
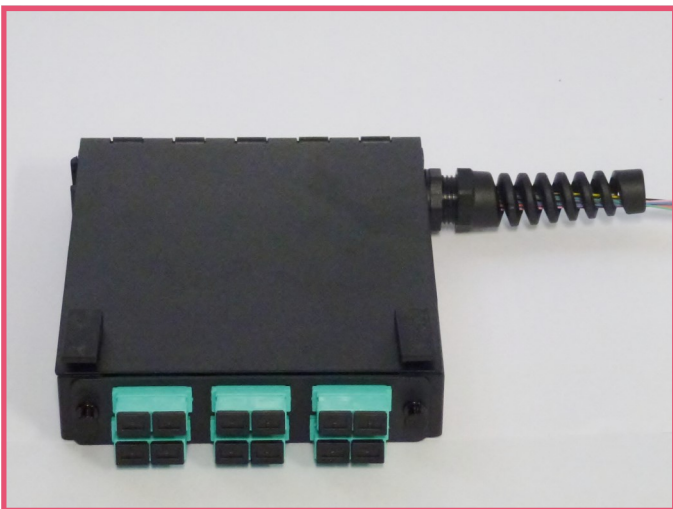
Small Workgroup Enclosure



Part Number	Description
FT-WM2	Small Wall Box—1 Plate
FTSCSX6	6 Port SC SX or LC DX Plate
FTSCDX6	6 Port SC DX or LC Quad Plate
FTSTS6	6 port ST Simplex Plate
FTSTS12	12 port ST Simplex Plate
FTBLANK	Blank Plate

Features

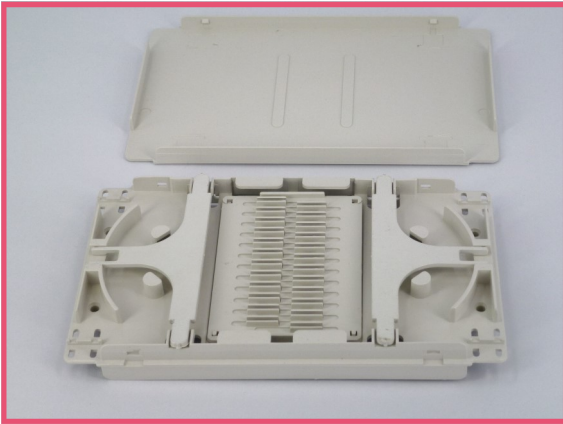
- Ideal for tight spots
- Versatile mounting options
 - Screw mount
 - Cable ties
 - Adhesive
- Up to 24 LC Fibres
- Includes kit with:
 - Cable ties,
 - Strain relief gland,
 - Splice Comb
- Connector plates available for:
 - FC Simplex
 - ST Simplex
 - SC Simplex or Duplex
 - LC Duplex or Quad
 - Blanking plates
- Black in colour



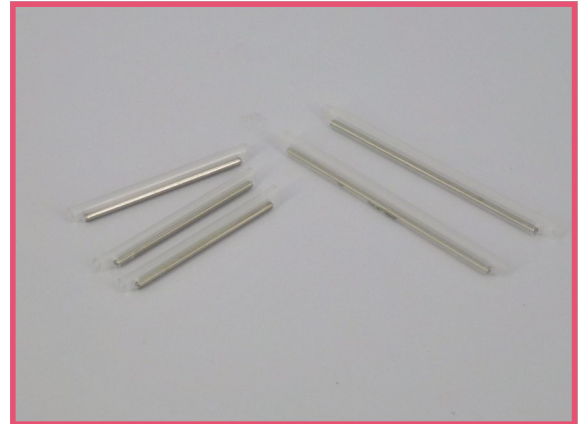
www.selectdata.com.au

07 3556 1480

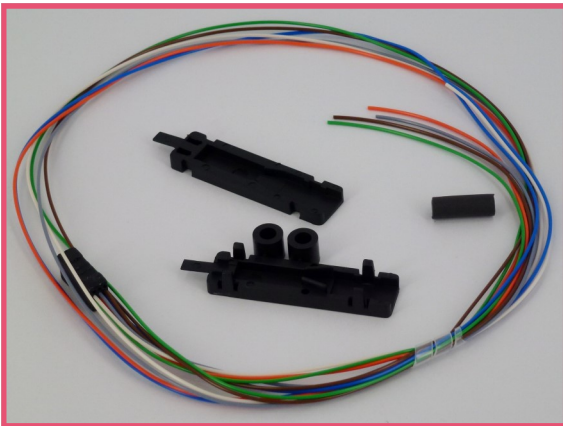
FOBOT Splice Accessories



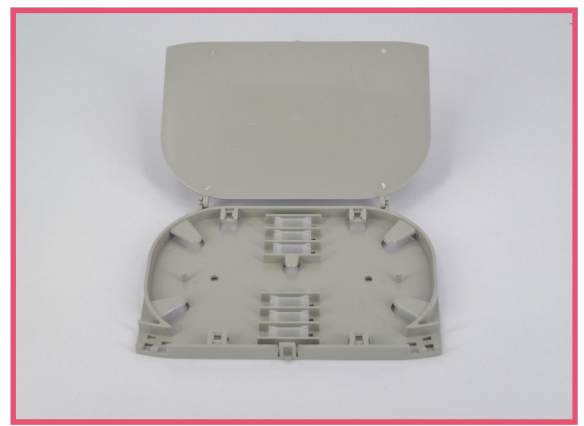
Part Number	Description
TL-ST24D	Deluxe Splice Tray 24 way
	<ul style="list-style-type: none"> • Excellent cable management • Stackable • Clips available to hinge trays



Part Number	Description
TL-SP40	40mm Heat shrink splice protector
TL-SP60	60mm Heat shrink splice protector



Part Number	Description
TL-FO12	Fan out kit 12 way with 600mm tail
TL-FO6	Fan out kit 6 way with 600mm tail



Part Number	Description
TL-ST24	Splice Tray 12 way
	<ul style="list-style-type: none"> • Stackable • Double load the splice protector to make 24 way • Compact size

www.selectdata.com.au

07 3556 1480

FOBOT Dome Closures



Dome Closures are design to be the perfect re-entenable jointing closure for Aerial / Pole, Wall Mount & Under-ground Fibre Optic Splicing applications.

The closure has been made from high quality Poly-Carbonate & features a easy to use clamp with a Silicon Rubber seal for entry. The kit also includes all the accessories you need during termination including Sealant Lined Heat-Shrink Tubing.

Part Number	DC-12	DC-24	DC-48	DC-96
Dimensions (mm)	85x330	100 x 340	210x440	210x440
Weight (kg)	1.5	1.5	4	4
Cable Diameter (mm)	7 to 19	7 to 18	7 to 22	7 to 22
Entry Ports	2 in / 2 out	2 in / 3 out	6	6
Number of Tray s	2	2	2	4
Max Number of cores per tray	6	12	24	24
Max Capacity	12	24	48	96

Kits include:

- Splice Tray
- Splice Protectors
- Nylon cable ties
- Hanging Hook
- Branch Block
- Marking Stickers

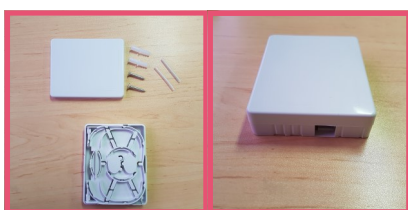
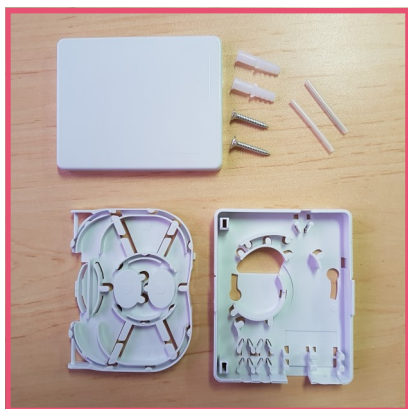


www.selectdata.com.au

07 3556 1480

FOBOT

Indoor Plastic Wall Boxes



Indoor Optical Fibre WallBox

- 150x110x30mm
- 3 x 5mm Cable Entry
- Build in Cable Management & Splice Comb
- Indoor use only
- Includes:
 - 2 x Cable Ties,
 - 2 x Splice Protectors,
 - 2 x Wood Screw & Gyprock mounting plugs
- Designed for 1 or 2x SC SX or 1or 2x SC/APC SX adaptors, (could house 1 or 2 x LC DX Connectors)
- Ideal for Fibre to the Desktop
- Ideal for Fibre to the Home/Apartment/Hotel room



Indoor Optical Fibre WallBox

- 150x110x30mm
- 2 x 5mm Cable Entry
- Build in Cable Management & Splice Comb
- Indoor use only
- Includes:
 - 4 x Cable Ties,
 - 4 x Splice Protectors,
 - 4 x Wood Screw & Gyprock mounting plugs
- Designed for 4x SC SX or 4 x SC/APC SX adaptors, (could house 2 x LC DX Connectors)

www.selectdata.com.au

07 3556 1480

FOBOT

Outdoor Plastic Wall Box 6 Fibre



Outdoor Optical Fibre WallBox

- 210x140x40mm
- 1 x 12mm Grommeted Cable Entry
- Build in Cable Management & Splice Comb
- Suitable for Indoor and Outdoor use
- IP55 Rated
- Includes:
 - 6 x Splice Protectors,
 - 2 x Wood Screw & Gyprock mounting plugs
 - Door key
- Designed for 6x SC SX or 6 x SC/APC SX adaptors,
(could house 3 x LC DX Connectors)
- Great replacement for a FOBOT or Metal WallBox for small fibre counts

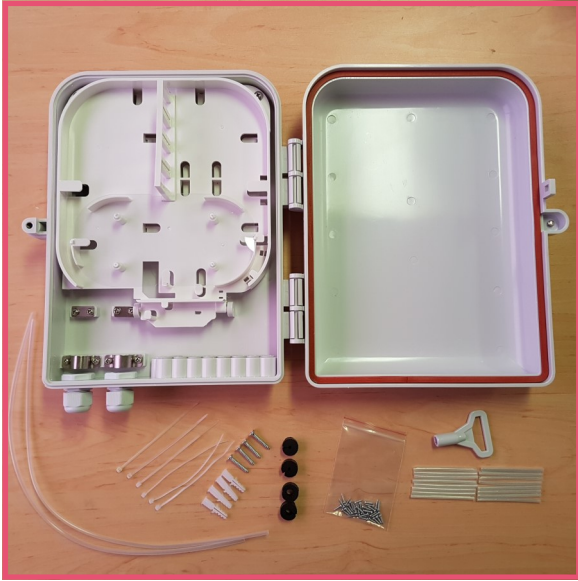


www.selectdata.com.au

07 3556 1480

FOBOT

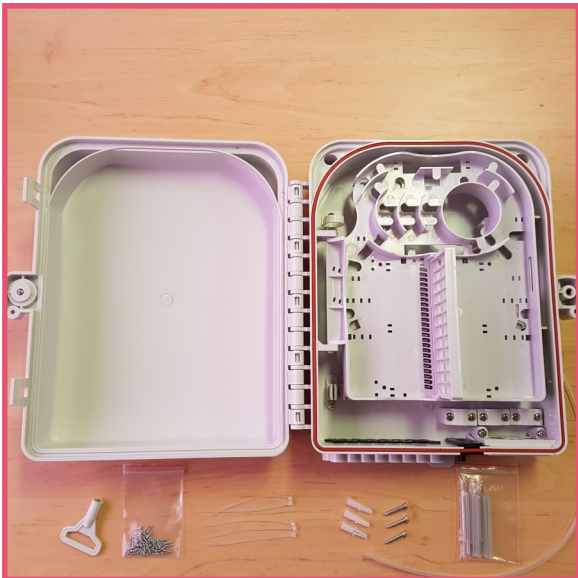
Outdoor Plastic Wall Box 12 Fibre



Outdoor Optical Fibre WallBox

- 240x300x90mm
- 2 x 10mm Grommetted Cable Entry
(+ 2 x 2 sizes of Gromet reducers)
- Build in Cable Management & Splice Comb
- Suitable for Indoor and Outdoor use
- IP55 Rated
- Includes:
 - 12 x Splice Protectors,
 - 4 x Wood Screw & Gyprock mounting plugs
 - Door key
 - 80mm of 3mm protective over tube
- Designed for 12x SC SX or 12 x SC/APC SX adaptors,
(could house 6 x LC DX Connectors)
- Great replacement for a FOBOT or Metal WallBox for small fibre counts

Outdoor Plastic Wall Box 24 Fibre



Outdoor Optical Fibre WallBox

- 280x320x120mm
- 2 x Slotted Multi-Size Rubberised Cable Entry
- Build in Cable Management & Splice Comb
- Suitable for Indoor and Outdoor use
- IP55 Rated
- Includes:
 - 24 x Splice Protectors,
 - 4 x Wood Screw & Gyprock mounting plugs
 - Door key
 - 40mm of 3mm protective over tube
- Designed for 24x SC SX or 24 x SC/APC SX adaptors,
(could house 12 x LC DX Connectors)
- Great replacement for a FOBOT or Metal WallBox for small fibre counts

www.selectdata.com.au

07 3556 1480