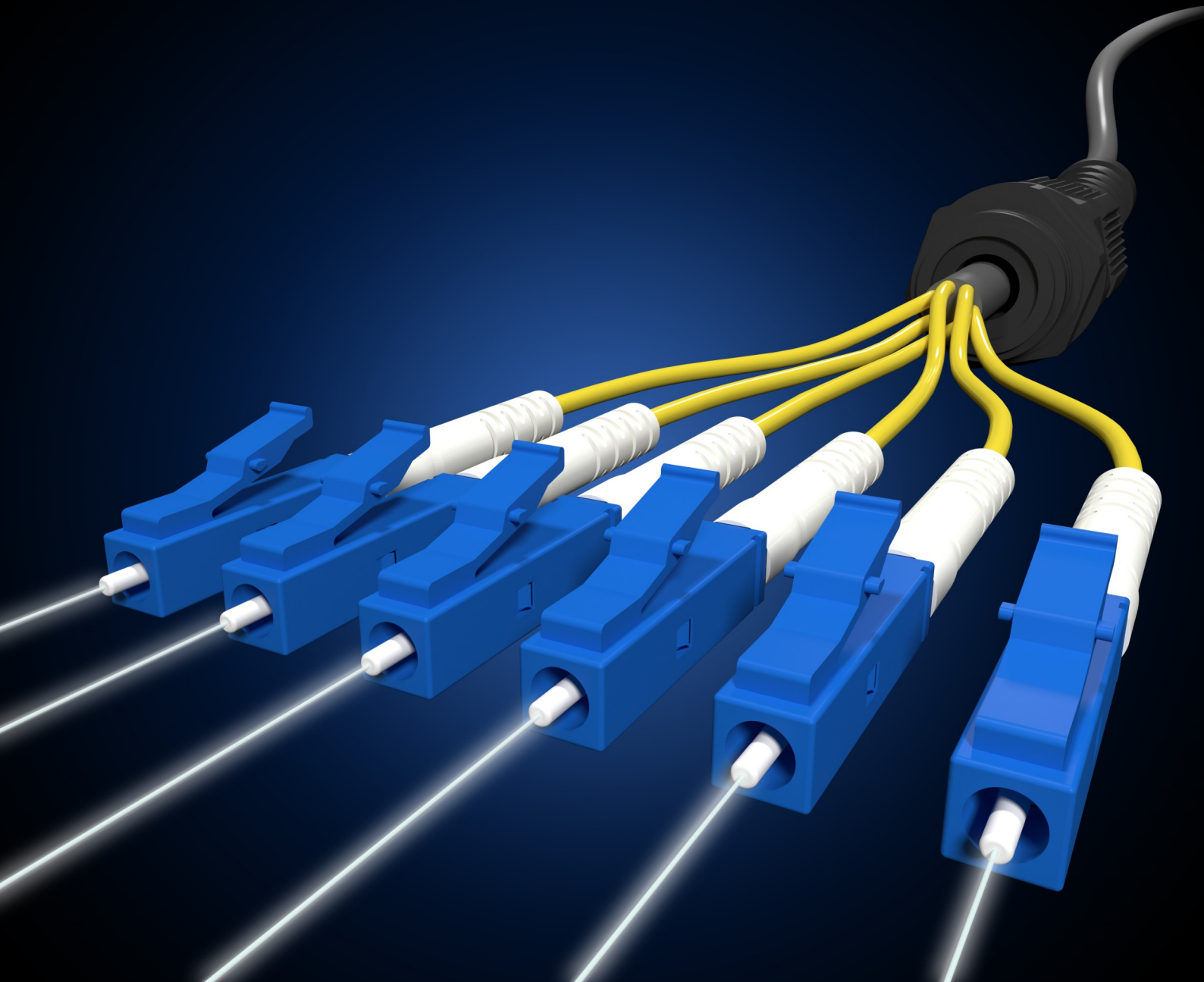


2019 Product Catalogue

Fibre Optic Connectivity Sub-Catalogue



Optical Fibre Patch Cords

Connectors:

- LC, SC, ST, MTRJ, FC, SC/APC, LC/APC

Cable Types:

- OM1, OM3, OM4, OS1, OS2
- Standard lengths are 1,2,3,5,10,15,20 Metres,
- Custom lengths on request

Features

- Available for single-mode and multimode
- Available in a variety of colours
- Available in 3mm, 2mm, 1.8mm or 900µm cable
- Available in standard and custom configurations
- Available in Duplex, Simplex or Pigtail
- Low back reflection and insertion loss
- PVC or LSZH cable available
- Ceramic ferrule

Fibre Types and Polishes

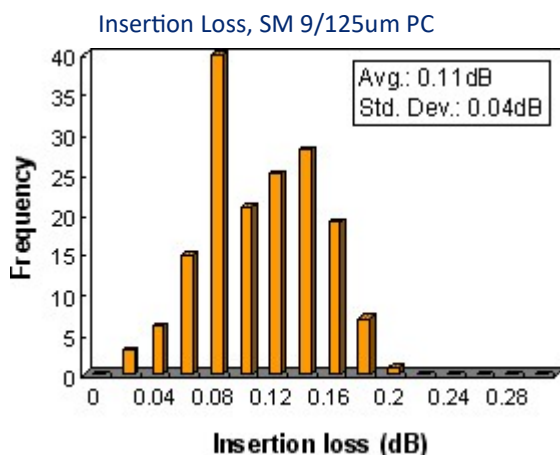
- 50/125µm and 62.5/125µm for multimode, PC polish
- 9/125µm for single-mode, UPC and APC polish

Typical/Maximum Insertion Loss

- ≤ 0.15 / ≤ 0.30 dB for UPC single-mode
- ≤ 0.15 / ≤ 0.30 dB for APC single-mode
- ≤ 0.20 / ≤ 0.30 dB for PC multimode

Maximum Return Loss

- ≥ 50 dB for UPC single-mode fibre
- ≥ 60 dB for APC single-mode fibre



*Typical performance charts and Actual Data may vary from lot to lot



Cable Standards:

SM:

- ◆ ITU-T G.652 (Categories A,B,C & D)
- ◆ IEC 60793-2-50 (Type B1.1 & B1.3)
- ◆ TIA/EIA-492 CAAB Fibre

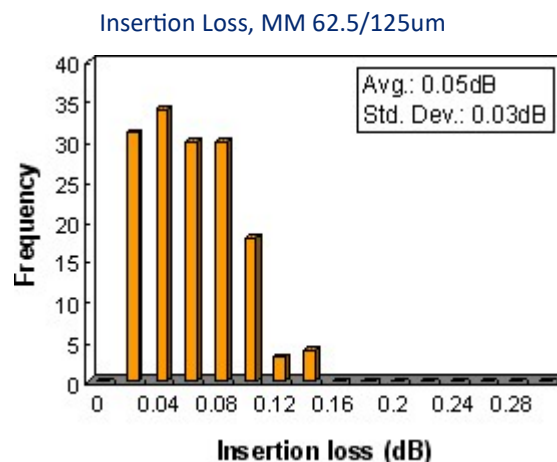
MM:

50/125um

- ◆ ITU G51
- ◆ IEC 793-2 Type A1 Optical Fibre Spec

62.5/125

- ◆ IEC 793-2 Type A1b Optical Fibre Spec

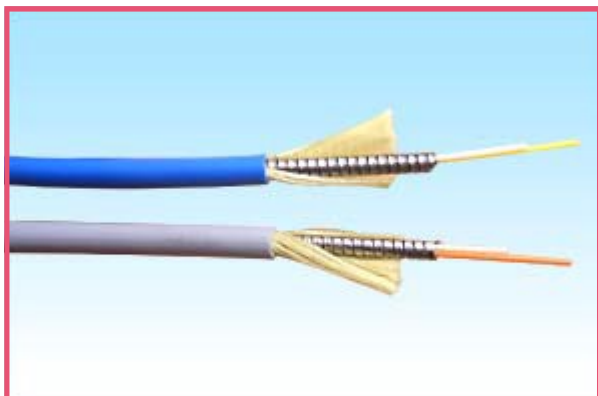


www.selectdata.com.au

07 3556 1480


SelectData
Cables, Connectors & More

Optical Fibre Ruggedized Patch Cords



Features:

- A Micro diameter stainless steel tube for protection
- High resistance of tensile strength, pressure, rodent bite
- More convenient to deploy safely
- Patch cords are available for all connectors series
- Long-life construction
- Protects the optical fibre from harsh environments and improper operation

Outer Jacket Dia					
Fiber Count	1	2	4	6	8-12
Dia (mm)	2.0/3.0	3.0	4.0	4.5	6.0
	Singlemode		Multimode		
Standard Jacket Colour	Blue		Grey		
Operation Temp	-20°C ~ +70°C		-20°C ~ +70°C		
Max Pulling Force (N)	Short Term	200	Short Term	200	
	Long Term	150	Long Term	150	
Crush Resistance (N/100MM)	Short Term	3000	Short Term	3000	
	Long Term	1500	Long Term	1500	
Attenuation	1310nm	Max0.35dB/km	1310nm	Max3.0dB/km	
	1550nm	Max0.25dB/km	1550nm	Max1.0dB/km	
Stainless Steel Tube	SUS204				
Outer Jacket	PVC / LSZH				
Min Bending Radius	Min 30mm				

www.selectdata.com.au

07 3556 1480

Optical Fibre

LC Uni Boot Patch Cords

Market leading technology

In modern Data Centre applications Network Engineers need to consider all advantages available from the latest product developments.

Our Data Centre LC Uniboot Low Loss Fibre Patch leads offer savings & benefits over & above standard products.

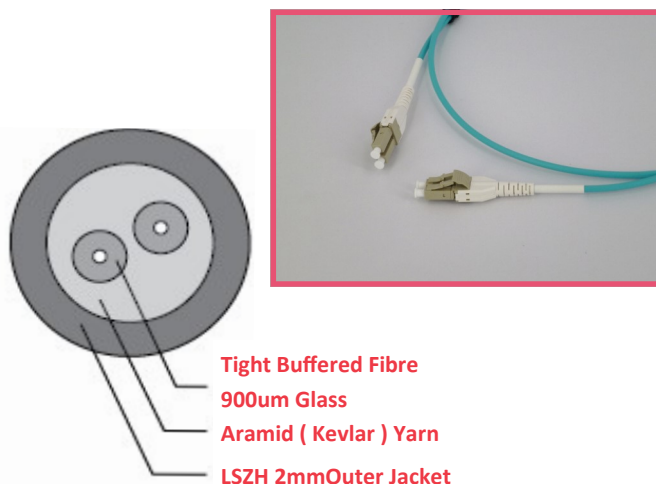
The Uniboot / Monotube design allows for easy routing in the cable management as it's simply is half the size of standard Zipcord and one tube, turns corners easier than two.

An additional benefit will be found in the reduction of bulk, in that it allows for more efficient airflow & therefore a reduction in those expensive cooling & power costs.

Couple this with our factory tested & reported low loss termination which allow you to optimize loss budgets, and the Data Centre LC Uniboot Low Loss Fibre lead, put you in front of the game.

Data Centre—LC UniBoot

Low Loss Fibre Leads



Key Features:

Applications:

- Data Centres
- High Density Applications
- Low Loss Applications

Specifications:

Insertion Loss	<0.10dB
Return Loss	-55dB(SM) -30dB(MM)
Durability	500 cycles
Operating Temp	-40 to +85°C
Ferrule	Zirconia
Jacket	LSZH

Options:

Multimode	OM3 OM4
Single Mode	OS2
Jacket Colour	Call for info
Length	0.5m to 300m

Uniboot / Montube construction:

The Uniboot / Monotube construction offer distinct advantages over standard Duplex Zip-Cord / Figure 8 construction.

These include:

- Easier routing in cable management
- Less bulk, Half the size of standard leads
- Allows great airflow cooling within cabinet

Low insertion loss termination:

Each cable has been factory tested to have a connector IL of less than 0.10dB.

Each cable is serial numbered & it's results are included in the packaging & in a separate test report for easy reference during network design

Quality Market leading construction:

- LSZH (Low Smoke Zero Halogen) Jacket
- Easy Turn Connector, to reverse lead polarity
- Aramid (Kevlar) Yarn
- Zirconia Ceramic Connector Ferrule
- Easy release tab on LC Connector for crowded patch panels

www.selectdata.com.au

07 3556 1480


SelectData
Cables, Connectors & More

Optical Fibre

ODVA IP68 Ruggedized System



The ODVA Connectors, together with their mating TPU / Tactical optical cables, are fast becoming the standard interface specified for 3G, 4G, WiMAX Base Stations and Fiber-to-the Antenna applications.

Rated for IP68 requirements ODVA Connectors have passed testing for salt mist, humidity, dust, vibration & shock.

Suitable for MM & SM applications

Typical applications include:

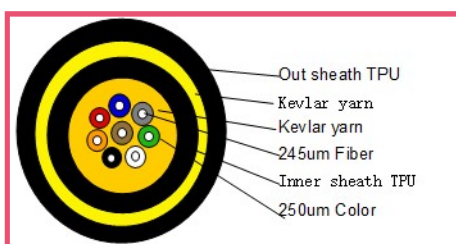
- Mining
- Industrial
- Aerospace
- Defence

Suitable connectors include:

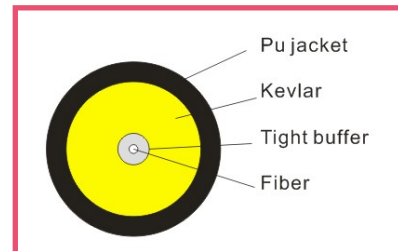
SC	Single Core
SC / APC	Single Core
LC Duplex	Dual Core
LC/APC Duplex	Dual Core
MPO/MTP	8, 12, 24 core



Typical cable construction for multicore cables



Typical cable construction for single cables



www.selectdata.com.au

07 3556 1480

Optical Fibre Adaptors

Fibre Optic Adaptors

Adaptors, also known as couplers, are used to precisely align the end face of fibre optic connectors.

Adaptors are available in both simplex and duplex designs and utilize high quality zirconia sleeves.

Standard adaptors are available for all connector types, and most commonly mount in a FOBOT panel or wall plate.

Common Connector Types:

SC

LC

ST

SC Angle

LC Angle

MPO / MTP

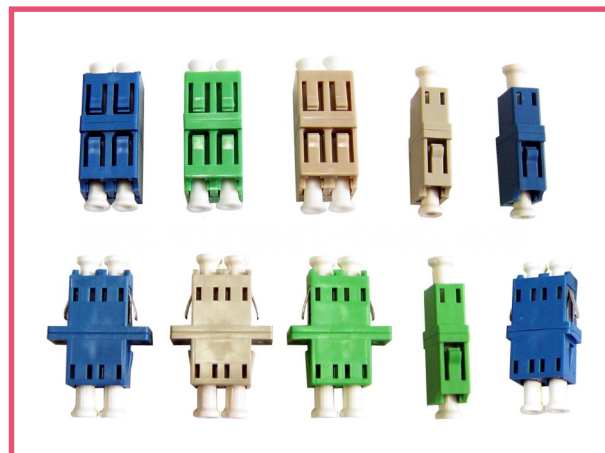
FC

FC Angle

MTRJ

All mode types are supplied and colour coded to match connector and cable jackets

Inters-series adaptors are also available on request.



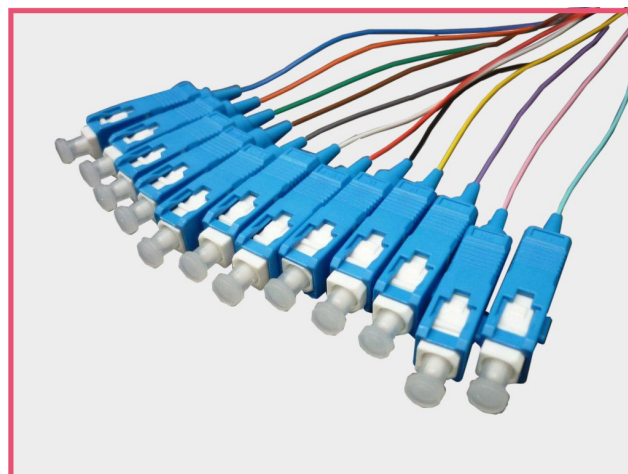
www.selectdata.com.au

07 3556 1480

Optical Fibre Pigtails

Features

- Available for single mode and multimode
- Standard in 0.9mm (Available with 3mm or 2mm)
- Available in standard and custom configurations
- Low back reflection and insertion loss
- Ceramic ferrule
- SC, LC, ST, FC, MTRJ, SC/a, LC/a, Connectors
- Available in single pack of white
- 12 colour multi-pack IEC colours
- Custom Lengths and Colours available

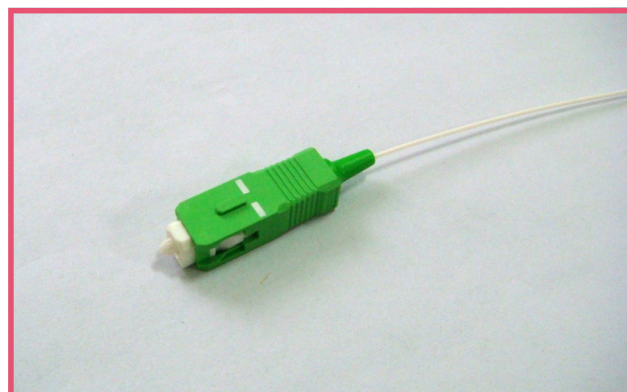


Fibre Types and Polishes

50/125µm and 62.5/125µm for multimode
9/125µm for single mode, UPC and APC polish

Typical/Maximum Insertion Loss

≤ 0.15 / 0.30 dB for UPC single mode
≤ 0.15 / 0.30 dB for APC single mode
≤ 0.20 / 0.30 dB for multimode



Maximum Return Loss

≥ 50 dB for UPC single mode fibre
≥ 60 dB for APC single mode fibre

Physical Environment:

Operating temperature:

Bend Radius:

Indoor / Splice Enclosure

20c to +70c

Minimum 25mm

Standards

IEC61300-2

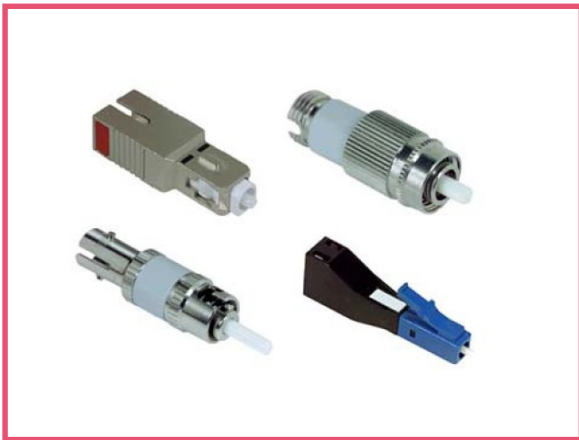
AS/ACIF S008:2001

G.652D Low Water Peak (Single Mode)

www.selectdata.com.au

07 3556 1480

Optical Fibre Attenuators



Part Numbers

ATS-SC-5	5dB	SC Attenuator Male to Female
ATS-SC-10	10dB	SC Attenuator Male to Female
ATS-SC-15	15dB	SC Attenuator Male to Female
ATS-SCA-5	5dB	SCA Attenuator Male to Female
ATS-SCA-10	10dB	SCA Attenuator Male to Female
ATS-SCA-15	15dB	SCA Attenuator Male to Female
ATS-LC-5	5dB	LC Attenuator Male to Female
ATS-LC-10	10dB	LC Attenuator Male to Female
ATS-LC-15	15dB	LC Attenuator Male to Female

Features

- In-Line Style
- Ceramic ferrules
- Top Quality materials
- Easy to Use
- Bi-Directional
- Available in all connectors Styles
- Stocked in LC/SC/SCA

Specifications

- 1310 / 1550nm
- 1dB to 20dB available
- Stocked in 5db, 10dB & 15dB
- -40° to +85° C

Other Attenuator Products

- Multi-Mode
- Variable
- Clip-on
- In-Line

Warranty

- Lifetime Replacement

www.selectdata.com.au

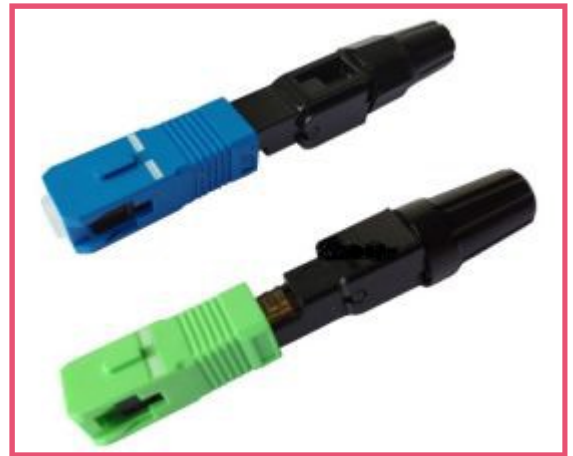
07 3556 1480

Optical Fibre SC Fast Connect

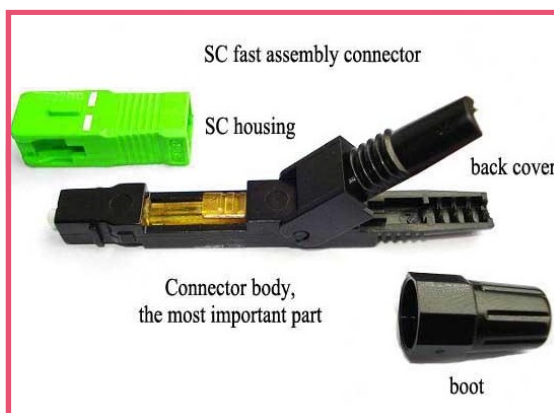
Field Assembly SC connector can provide a quick and easy termination of fibres in the field allowing the installer to terminate and make connection in minutes at equipment and fibre patch panels. This connector system removes any requirement for epoxy, adhesives or costly curing ovens.

Features

- Factory-installed fibre stub
- No epoxy or polishing required
- Quick and easy field termination
- Great for repair of breakages
- Cost effective



Applicable for	3.1x2.0mm drop cable or 3.0/2.0/0.9mm cable
Optical fiber diameter	φ125um (657A&657B)
Tight buffer diameter	φ250um
Fiber mode	Single mode
Operation time	About 10s (exclude fiber cut)
Insert loss	≤0.3dB (1310nm & 1550nm)
Return loss	≥45dB
Fastening strength of naked fiber	≥ 5N
Tight clamping force cladding	≥ 8N
Tensile strength	≥ 50N
Using temperature	-45°C~+80°C



www.selectdata.com.au

07 3556 1480