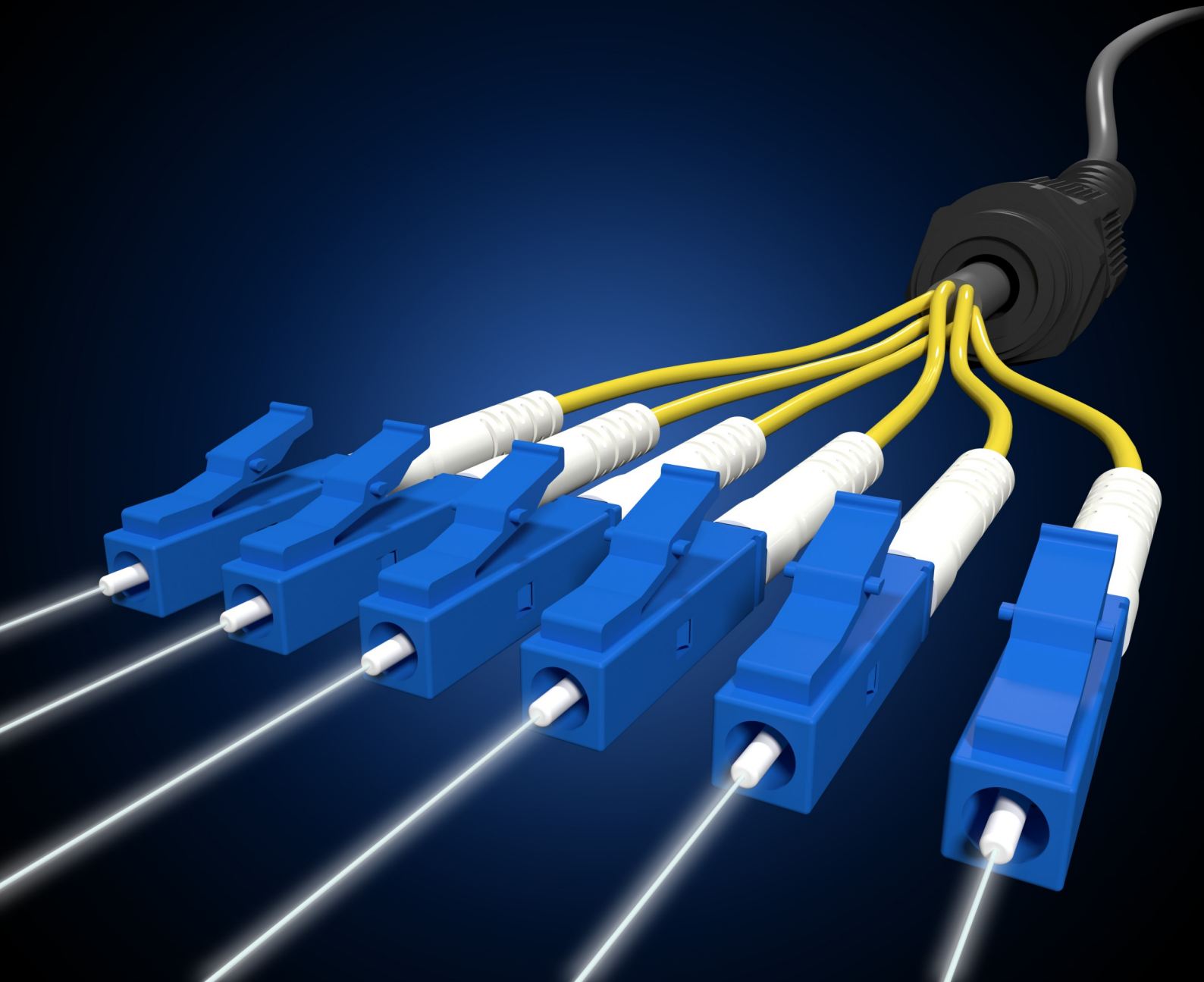


2019 Product Catalogue

Copper Ethernet Sub-Catalogue



Copper Ethernet Products

Lite Trace Leads

Lite Trace Copper RJ45 Leads

Features:

- Cable types
 - Cat 5 e
 - Cat 6
 - Cat 6 A
- LSZH Sheath
- Snag-less Connector Design
- Meets or exceeds all applicable standards
 - TIA/EIA 568C.2
 - ISO/IEC 11801
 - ACMA

Unique Features:

Lite Trace

Attach the Trace Tester tool to the local/known end of the lead, turn the power on and both the local/known and remote/unknown end will light up

Push the Power Button and it will toggle between two modes, constant and flashing

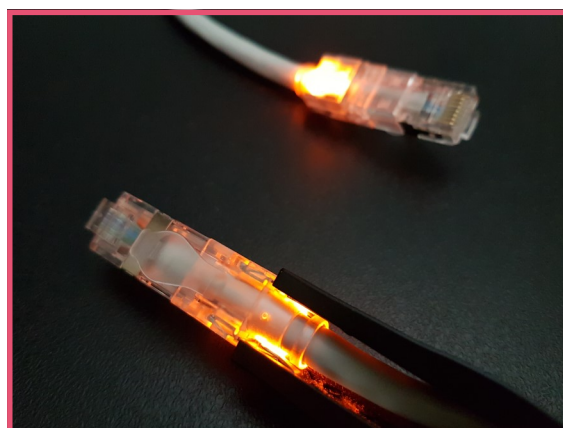
Description:

Looking for an easy method to trace your network connections in your crowded Data Centre or Equipment Cabinet infrastructure?

The answer is *LiteTrace Leads!*

Simply attached our Trace Tester tool to the rear of our *Lite Trace Lead* & we'll light the way

Fits with industry standard patch panels, network switches & Interface equipment



Part Number Breakdown

Product Series

Lite Trace

Cable mode Cat 5e / Cat 6 / Cat 6A

C6A

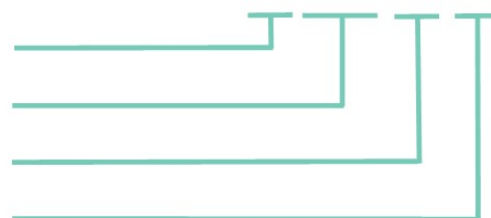
Cable Length in metres

0.5 metre

Sheath Colour

Blue

LT C6A 0.5 BL



www.selectdata.com.au

07 3556 1480


SelectData
Cables, Connectors & More

Copper Ethernet Products

Cat 5e Patch Leads



Cat 5e patch cables are the ideal choice for connecting home or small office networks including hubs, switches, routers, modems and patch panels.

Our Cat 5e patch cables meet or exceed Cat 5e specifications including international TIA/EIA standards and are A-Tick certified as per ACMA requirements.

Manufactured using 24AWG twisted pair stranded conductors and 50 Microns of gold on the connectors to guarantee maximum performance and to ensure reliable data transmission in the most demanding network environments.

For durability and long lasting performance, our Cat 5e cables feature a snagless design moulded boot to prevent unwanted cable snags during installation and protects the RJ45 connector clips from damage

Features:

- 24 AWG Wire
- Rated up to 350Mhz
- CM rated PVC Jacket
- Snag-less Boot
- RJ45 50u Gold Plated
- Australian Standards Approved (AS/CA S008/2010)
- Cat 5e Compliance (TIA568C.2)
- 10 Colours
 - ⇒ Blue
 - ⇒ Yellow
 - ⇒ Green
 - ⇒ Red
 - ⇒ Black
 - ⇒ Orange
 - ⇒ Violet
 - ⇒ White
 - ⇒ Pink
 - ⇒ Grey

Part #	Description	Length
C5PL0.5xx	Cat5e 24AWG Snagless Patch Leads	0.5mt
C5PL1xx	Cat5e 24AWG Snagless Patch Leads	1mt
C5PL1.5xx	Cat5e 24AWG Snagless Patch Leads	1.5mt
C5PL2xx	Cat5e 24AWG Snagless Patch Leads	2mt
C5PL3xx	Cat5e 24AWG Snagless Patch Leads	3mt
C5PL5xx	Cat5e 24AWG Snagless Patch Leads	5mt
C5PL10xx	Cat5e 24AWG Snagless Patch Leads	10mt
xx = Colour: BL=Blue, YL = Yellow, GN = Green, RD = Red, PK = Pink BK = Black, OR = Orange, VL = Violet, WH = White, GY=Grey		

www.selectdata.com.au

07 3556 1480


SelectData
Cables, Connectors & More

Copper Ethernet Products

Cat 6 Patch Leads



Features:

- 24 AWG Wire
- Rated up to 550Mhz
- CM rated PVC Jacket
- Snag-less Boot
- RJ45 50u Gold Plated
- Australian Standards Approved (AS/CA S008/2010)
- Cat 6 Compliance (TIA568C.2)
- 10 Colours
 - ⇒ Blue
 - ⇒ Yellow
 - ⇒ Green
 - ⇒ Red
 - ⇒ Black
 - ⇒ Orange
 - ⇒ Violet
 - ⇒ White
 - ⇒ Pink
 - ⇒ Grey

Your network is only as good as your infrastructure. Cat 6 patch cables are designed for high performance networks where maximum speeds and reliability are required. Ideal for connecting switches, storage devices, routers, modems, host adapters and patch panels. Our Cat 6 patch cables meet or exceed Cat 6 specifications including international TIA/EIA standards and are A-Tick certified as per ACMA requirements.

Manufactured using 24AWG twisted pair stranded conductors and 50 Microns of gold on the connectors to guarantee maximum performance and to ensure reliable data transmission in the most demanding network environments. Our Cat 6 cables also feature staggered pin construction and offset twisted pairs to minimize Near End Crosstalk (NEXT) levels.

For durability and long lasting performance, our Cat 6 cables feature a snagless design moulded boot to prevent unwanted cable snags during installation and protects the RJ45 connector clips from damage.

Part #	Description	Length
C6PL0.5xx	Cat6 24AWG Snagless Patch Leads	0.5mt
C6PL1xx	Cat6 24AWG Snagless Patch Leads	1mt
C6PL1.5xx	Cat6 24AWG Snagless Patch Leads	1.5mt
C6PL2xx	Cat6 24AWG Snagless Patch Leads	2mt
C6PL3xx	Cat6 24AWG Snagless Patch Leads	3mt
C6PL5xx	Cat6 24AWG Snagless Patch Leads	5mt
C6PL10xx	Cat6 24AWG Snagless Patch Leads	10mt
xx = Colour: BL=Blue, YL = Yellow, GN = Green, RD = Red, PK = Pink BK = Black, OR = Orange, VL = Violet, WH = White, GY=Grey		

www.selectdata.com.au

07 3556 1480


SelectData
Cables, Connectors & More

Copper Ethernet Products

Cat 6A S/FTP Patch Leads



10 Gigabit Ethernet Cat 6A S/FTP shielded patch cables are designed for high performance networks in the data centre or anywhere maximum speeds and reliability are required.

Our Cat 6A S/FTP patch cables meet or exceed Cat 6A specifications including international TIA/EIA standards, IEEE 802.3an, ISO/IEC 11801 and are A-Tick certified as per ACMA requirements.

These shielded cables are manufactured using four individually aluminium foil mylar wrapped twisted pairs and an overall braided shield to eliminate alien crosstalk and to ensure reliable data transmission in the most demanding network environments.

Our Cat 6A cables also feature staggered pin construction and offset twisted pairs to minimize Near End Crosstalk (NEXT) levels.

For durability and long lasting performance, Cat 6A patch cables feature a snagless design moulded boot to prevent unwanted cable snags during installation and protects the RJ45 connector clips from damage

Features:

- 26 AWG Wire
- Fire Resistant/Flame Retardant PVC Jacket
- Shielding—Overall Braid
- Shielding—Ali Foil /Mylar on each pair
- Snag-less Boot
- Shielded RJ45 50u Gold Plated—Staggered Pin
- Australian Standards Approved (AS/CA S008/2010)
- Cat 6A Compliance (TIA568C.2.1)
- 8 Colours
 - ⇒ Blue
 - ⇒ Red
 - ⇒ Grey
 - ⇒ Orange
 - ⇒ Violet
 - ⇒ Yellow
 - ⇒ Green
 - ⇒ Black

Part #	Description	Length
C6APLS0.5xx	Cat6a 24AWG S/FTP Patch Leads	0.5mt
C6APLS1xx	Cat6a 24AWG S/FTP Patch Leads	1mt
C6A5PSL1.5xx	Cat6a 24AWG S/FTP Patch Leads	1.5mt
C6APLS2xx	Cat6a 24AWG S/FTP Patch Leads	2mt
C6APLS3xx	Cat6a 24AWG S/FTP Patch Leads	3mt
C6APLS5xx	Cat6a 24AWG S/FTP Patch Leads	5mt
C6APLS10xx	Cat6a 24AWG S/FTP Patch Leads	10mt
xx = Colour: BL=Blue, YL=Yellow, RD=Red, GY=Grey BK = Black, GN = Green, OR=Orange, VL=Voilet		

www.selectdata.com.au

07 3556 1480



Copper Ethernet Products

Slimline Cat 6A Patch Leads



Slimline Category 6A Patch Leads are quickly becoming the preferred patching solution for crowded Server Rooms, Data Centres & Patch Systems.

The decreased diameter of the cable, about half the size of a standard cable, allows for easier cable management, and flexibility as well as better airflow in the cabinet.

We have incorporated a quality 50u Gold RJ45 Connector with a snag-less tab protector, ensure the best quality solution of your cabling plant.

Features:

- Half the space of a standard Cat 6A Patch Lead
- 28 AWG Wire
- 3.8mm O.D.
- LSZH Jacket
- Snag-less Boot
- RJ45 50u Gold Plated
- Australian Standards Approved (AS/CA S008/2010)
- Cat 6A Compliance (TIA568C.2.1)
- 10 Colours
 - ⇒ Blue
 - ⇒ Yellow
 - ⇒ Green
 - ⇒ Red
 - ⇒ Black
 - ⇒ Orange
 - ⇒ Violet
 - ⇒ White
 - ⇒ Pink
 - ⇒ Grey

Part #	Description	Length
C6ASPL0.3xx	Slim Cat6A 28AWG LSZH Patch Leads	0.3mt
C6ASPL0.5xx	Slim Cat6A 28AWG LSZH Patch Leads	0.5mt
C6ASPL1xx	Slim Cat6A 28AWG LSZH Patch Leads	1mt
C6ASPL1.5xx	Slim Cat6A 28AWG LSZH Patch Leads	1.5mt
C6ASPL2xx	Slim Cat6A 28AWG LSZH Patch Leads	2mt
C6ASPL3xx	Slim Cat6A 28AWG LSZH Patch Leads	3mt
C6ASPL5xx	Slim Cat6A 28AWG LSZH Patch Leads	5mt
xx = Colour: BL=Blue, YL = Yellow, GN = Green, RD = Red, PK = Pink BK = Black, OR = Orange, VL = Violet, WH = White, GY=Grey		

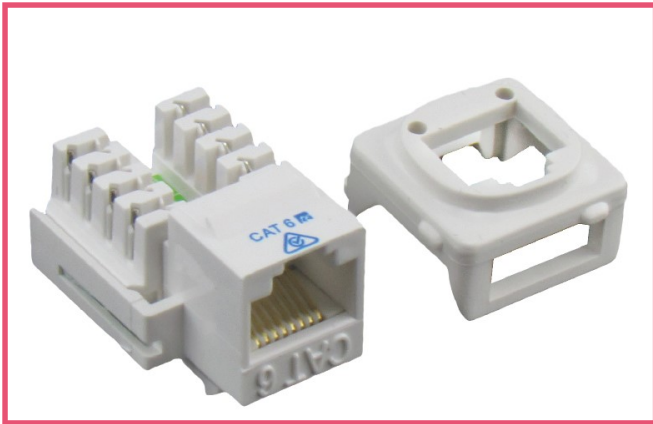
www.selectdata.com.au

07 3556 1480



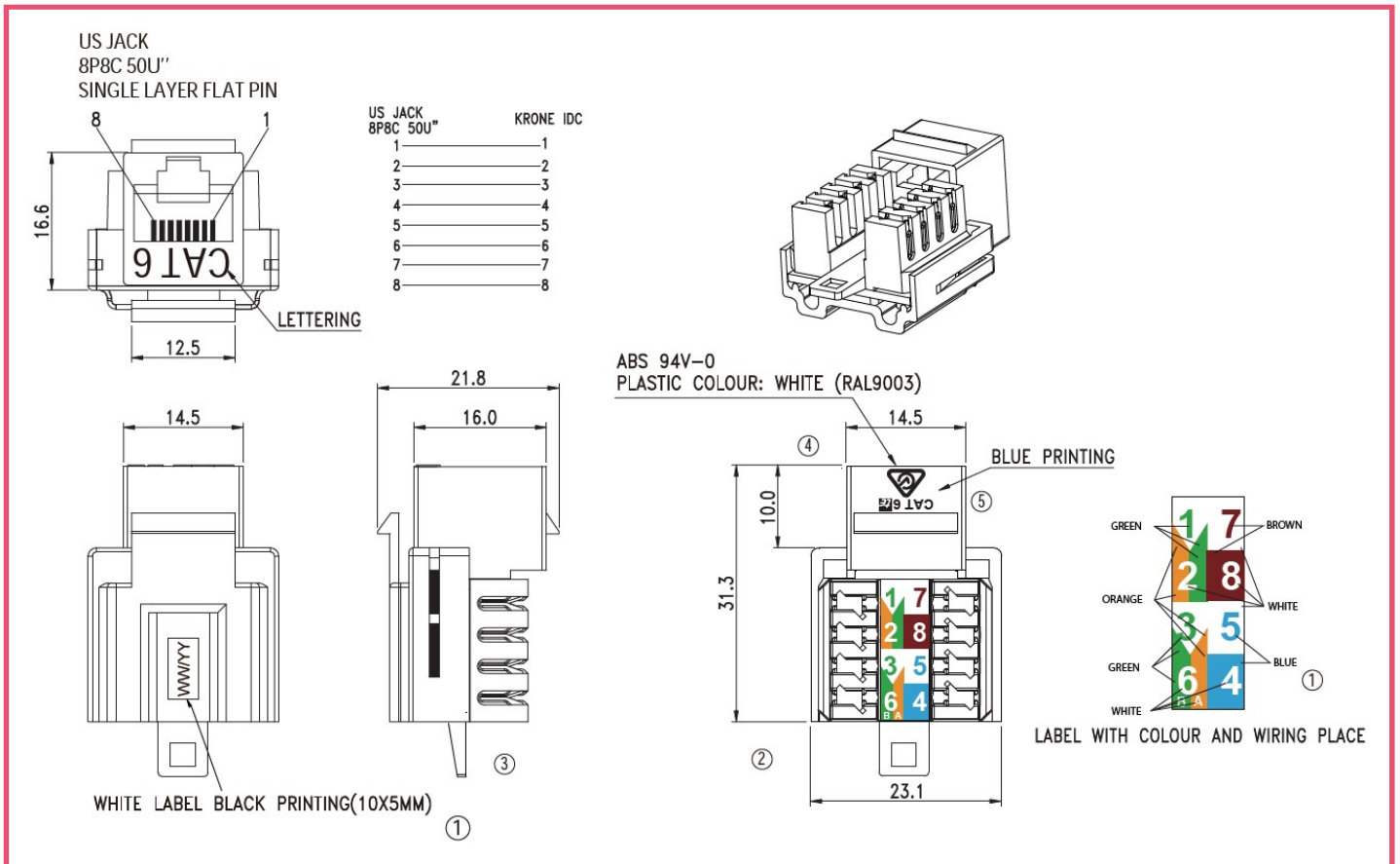
Copper Ethernet Products

Cat 6 Keystone Jacks



FEATURES

- 180 degree Keystone Jack
- Main Housing & IDC Terminal: UL94-VO
- IDC Termination: Phosphor Bronze, Tin Plated
- 8PINS: Gold Plating- 50U"
- RJ45 Contacts: Insertions >750 Times
- IDC Life: Insertions >250 Times
- Compliant with EIA/TIA specifications
- Dual colour-coded label for both T568A/T568B wiring schemes
- RoHS Compliant
- Adaptor to suit HPM and Clipsal plates supplied
- Pack of 10 Keystone



www.selectdata.com.au

07 3556 1480

Copper Ethernet Products

Keystone Surface Mounts



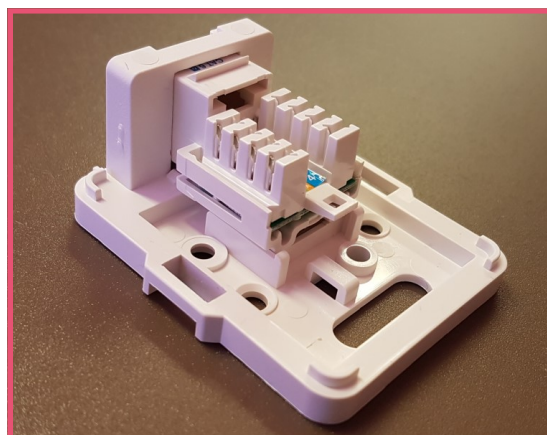
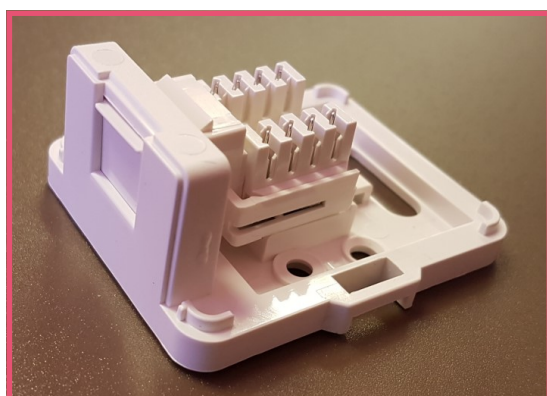
Features:

- Shutter Dust Doors
- Identification Label Window
- Fits standard Keystone Jacks
- ABS Plastic 94-VO
- Easy Clip on Top Covers
- Multiple Cable Entry Points
- Built in Cable tie points

- Includes:
- Mounting screws
 - Adhesive back
 - Cable Tie

Single: 60mm x 52mm x 28mm

Dual: 60mm x 73mm x 28mm

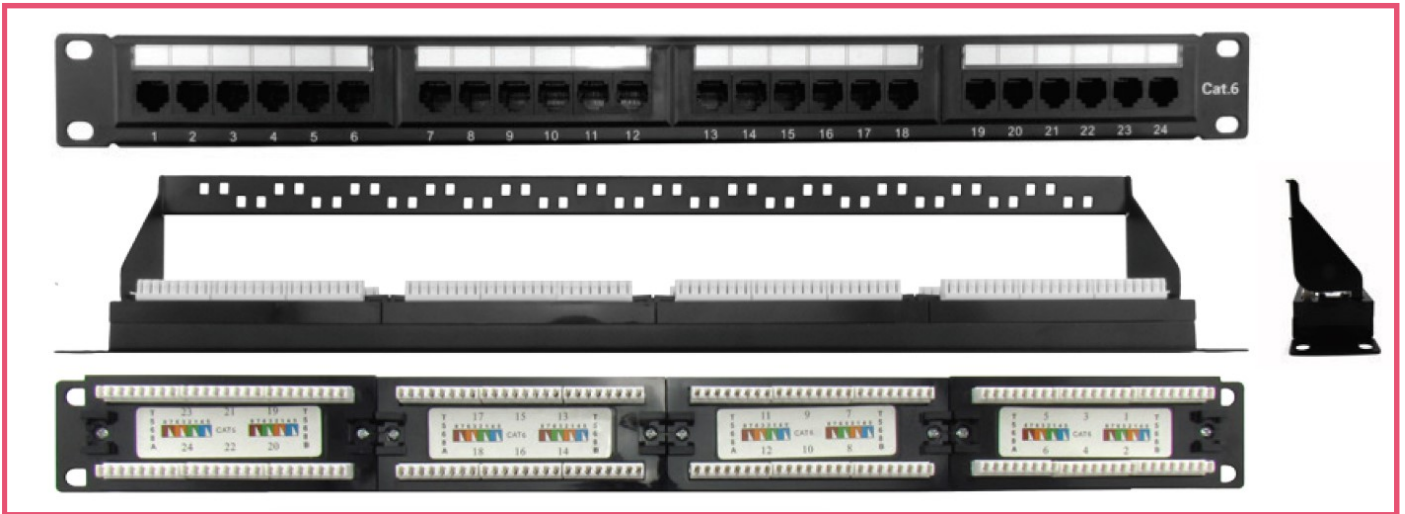


www.selectdata.com.au

07 3556 1480

Copper Ethernet Products

Cat 6 Patch Panels



FEATURES

Patch panel case, metal 1U

RoHS Compliant

RJ45 Jacks

Body: PC UL94V-0 rated.

Colour: Matte Black

50u" Gold plated over Nickel plated in contact area.

Tin-lead over Nickel in solder area.

Connector: Krone & 110 connector body: PC UL94V-0

Contact: Phosphor Bronze with Tin plated

Colour: Ivory

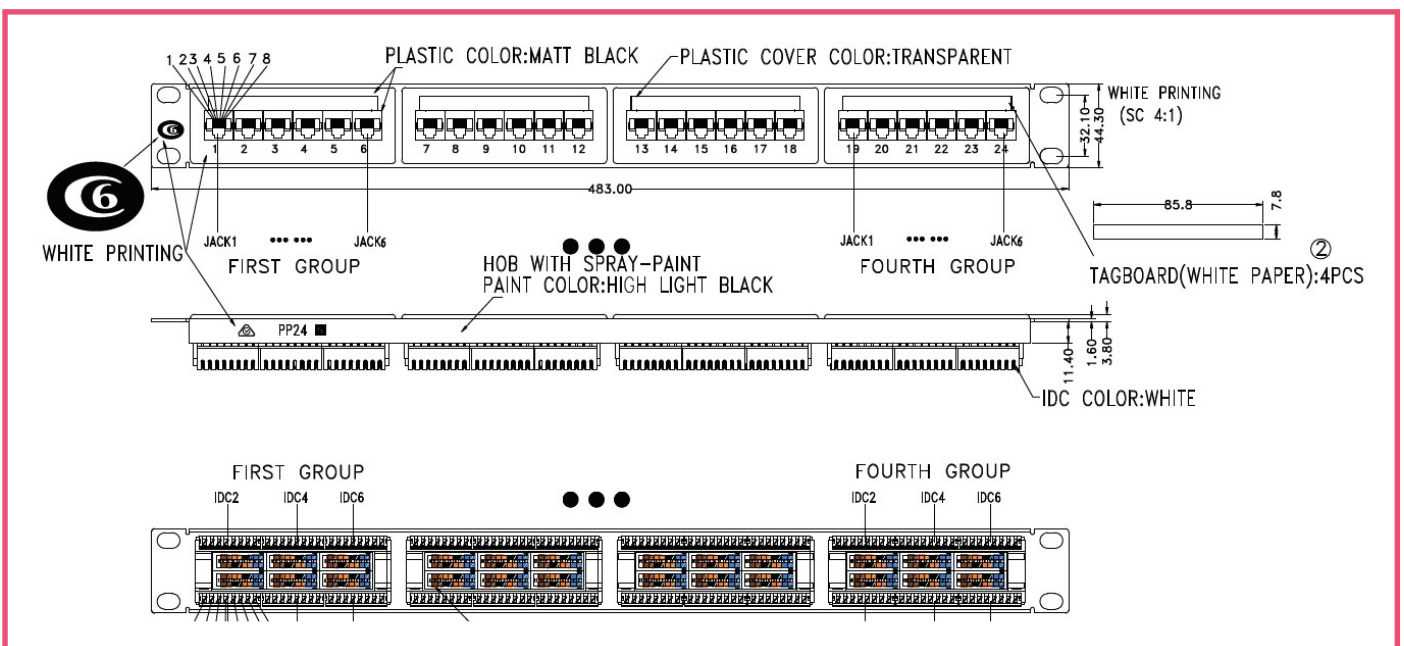
P.C. board: FR4, 1.6mm double side, UL94V-0

Operation temperature: 0° to 80°C

Insertion force: 900gms for 8 contacts

Retention strength: 7.7kgs between jack and plug

Durability: 750 cycles contact resistance test check



www.selectdata.com.au

07 3556 1480



Copper Ethernet Products

Cat 6 4 Pair Cable



FEATURES

- 305 Metre reel in a box
- Cable colour: Blue, Green, Grey, Orange, Purple, Yellow & special order colours available.
- Premium quality PVC Jacket Material and HPDE insulation compound
- Comply with latest Australian standards AS/CA S008:2010 + A1:2014
(Test report No.: 0813TEL_LAN5ESLD-LAND6SLD_S08)
- ETL Verified to ANTI/TIA-568-C.2 Category 6 (CERT.No.:3178930CRT-002m)
- Reach and RoHS compliance
- Production under UL follow-up inspection procedure

TRANSMISSION PERFORMANCE

Impedance	100±15 ohms(1~100MHz)
	100±22 ohms(101~200MHz)
	100±32 ohms(201~250MHz)
Propagation delay skew	45ns/100m

ITEM

Conductor	Material Anneal bare copper	
	Construction 1/0.57+/-0.01	
Insulation	Material	HDPE
	Thickness	0.21+/-0.005
	Diameter	0.99+/-0.02
Jacket	Material	PVC
	Thickness	0.58+/-0.05
	Diameter	6.1+/-0.3

SPECIFICATION

Freq(MHz)	Att.(dB/100m)	NEXT(dB/100m)	PSNEXT(dB/100m)	ACRF(dB/100m)	PSACRF(dB/100m)	RL(dB/100m)	DELAYns/100m
1	2.0	74.3	72.3	67.8	64.8	20.0	570.0
4	3.8	65.3	63.3	55.8	52.8	23.0	552.0
8	5.3	60.8	58.8	49.7	46.7	24.5	546.7
10	6.0	59.3	57.3	47.8	44.8	25.0	545.4
16	7.6	56.2	54.2	43.7	40.7	25.0	543.0
20	8.5	54.8	52.8	41.8	38.8	25.0	542.0
25	9.5	53.3	51.3	39.8	36.8	24.3	541.2
31.25	10.7	51.9	49.9	37.9	34.9	23.6	540.4
62.5	15.4	47.4	45.4	31.9	28.9	21.5	538.6
100	19.8	44.3	42.3	27.8	24.8	20.1	537.6
200	29.0	39.8	37.8	21.8	18.8	18.0	536.5
250	32.8	38.3	36.3	19.8	16.8	17.3	536.3

www.selectdata.com.au

07 3556 1480